



## ABOUT THE SOCIETY

Leaflets are available on the Alton Society stand giving full details of the Society. Please take one, and also a copy of the Town Design Statement that the Society played a large part in producing. It is a wonderful record and guide for future building in the town.

Our website : [www.altonociety.org.uk](http://www.altonociety.org.uk)

We hope to post the Celebrating Alton! video which is being prepared for the exhibition by Martin Saban-Smith.

The collection of individual submissions, poems, pictures, reminiscences is to be found on

<http://celebratingalton.blogspot.com/>

## AGM

The 40th Annual General Meeting of the Alton Society will be held here in the Alton Assembly Rooms, next Saturday, 20th November, 10.30 am.

There will be a short talk about the beginnings of the Society by the founding Chairman, Mr. Les Packett, and at the end of the formal business there will be an open discussion about the highly topical Museums and the Supermarkets issues.

All are most welcome to attend, but only members may vote.

***Please consider becoming a member***



## Acknowledgements

*The organising committee sincerely wishes to thank:*

**Tom Yendell**

for loan of the display boards

**Martin Saban-Smith**

for making the exhibition video and for publicity

**Luath Grant-Ferguson**

for having the original idea

Jason Passingham & Assembly Rooms staff

The Mayor of Alton

**Currys**

for lending a flat panel display

Alton Society members

**Jim Dickinson**

Tree warden

Alton Town & East Hants District Councils  
for financial support

Alton Museums

Alton Herald & Alton Post Gazette

**Stan Whitcher - Town Crier**

for stentorian advertising

All our performers

All the groups

for their displays

All the individual contributors



# celebrating ALTON

## Programme

**Alton Assembly Rooms  
13th November 2010**

**Exhibition to mark  
the 40th Anniversary  
of The Alton Society**

**Working together for the future of Alton**

## GROUPS EXHIBITING

### Alton Society Island

Alton Society display  
Alton Society Tree Warden  
Celebrating Alton Video

### Alton Town Island

History of Alton display  
Amery Hill Residents Association  
The Lawn  
Alton Infants School  
Friends of Curtis Museum & Allen Gallery  
Molson-Coors (History of Brewing in Alton)  
ThisIsAlton.co.uk  
Alton Town Council

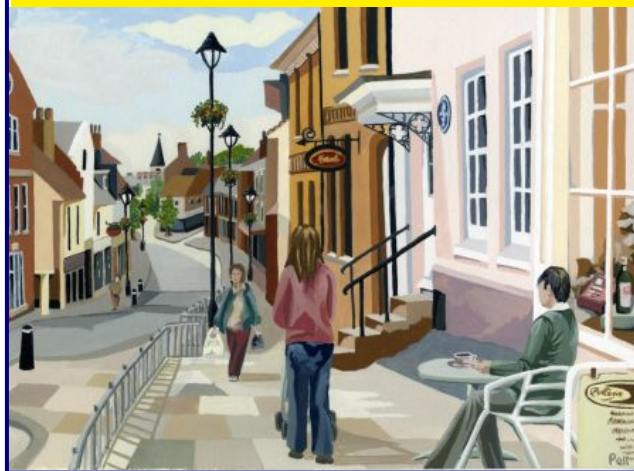
### Clockwise around hall from right of stage

Alton College  
Alton Choral Society  
Alton Local Food Initiative (ALFI)  
Greening Alton & Holybourne Campaign  
Alton Horticultural Society  
North East Hants Agricultural Association  
Alton Morris  
Alton Community Care  
Paper Furniture Social enterprises  
Alton U3A (University of the 3rd Age)  
Alton Counselling  
Alton Art Society  
Alton Community Choir  
Alton Natural History Society  
Alton Community Hospital  
Citizens Advice Bureau  
Rotary Clubs of Alton  
REHAB  
Alton Tennis Club  
Holybourne Youth Theatre  
Alton Ramblers  
Alton Lions Club  
Open Sight Alton  
Probus Club (Alton & District)  
Alton Allotment Association  
Alton Faith Communities (Combined)  
Alton & District Youth Council  
Alton Bowling Club  
Alton Town Twinning Association  
Alton Camera Club  
Alton Community Association  
Alton & District Trefoil Guild (Guides)  
Alton Westbrooke Guides  
Alton Inner Wheel  
Ancora (chamber choir)  
Alton Bridge Club  
Alton Operatic & Dramatic Society  
Alton Runners  
Alton Concert Orchestra  
Alton Health & Fun Club  
Alton Fringe Theatre  
Anstey Junior School  
Alton Library  
Alton Modern Sequence Dance Club



## PROGRAMME

9.30 am	Opening by the Mayor Alton Concert band
10.00	Alton Operatic and Dramatic Soc
11.00	Mini Morris (Alton Infant School)
11:45	King's Pond Shantymen
12:15 pm	Alton Morris
12:45	King's Pond Shantymen
1:10	Alton Morris
1.30	Jess, Ed and Ellan (jazz group)
2.00	Alton Community Choir
2.30	Suspirium (Recorder Group)
3.00	Ancora (Female voices)
3.30	Alton Choral Society
4.30	Close of exhibition



## INDIVIDUAL CONTRIBUTIONS

Thank you to the many individuals who have added to this unique event. Their contributions are displayed on the "What I love about Alton..." panels throughout the exhibition, on the web at <http://celebratingalton.blogspot.com/> and in the video. Here is a tiny sample:

*"Wherever you are in Alton,  
you can always see the edges. Lovely"*



*"... has moved with  
the times but  
retains that  
friendly small  
market town feel"*



Alton Community Hospital



*"I like the people, I find them  
very helpful, obliging and friendly"*